

KS-55727 "MASHEKA"
on chassis of MAZ-6303



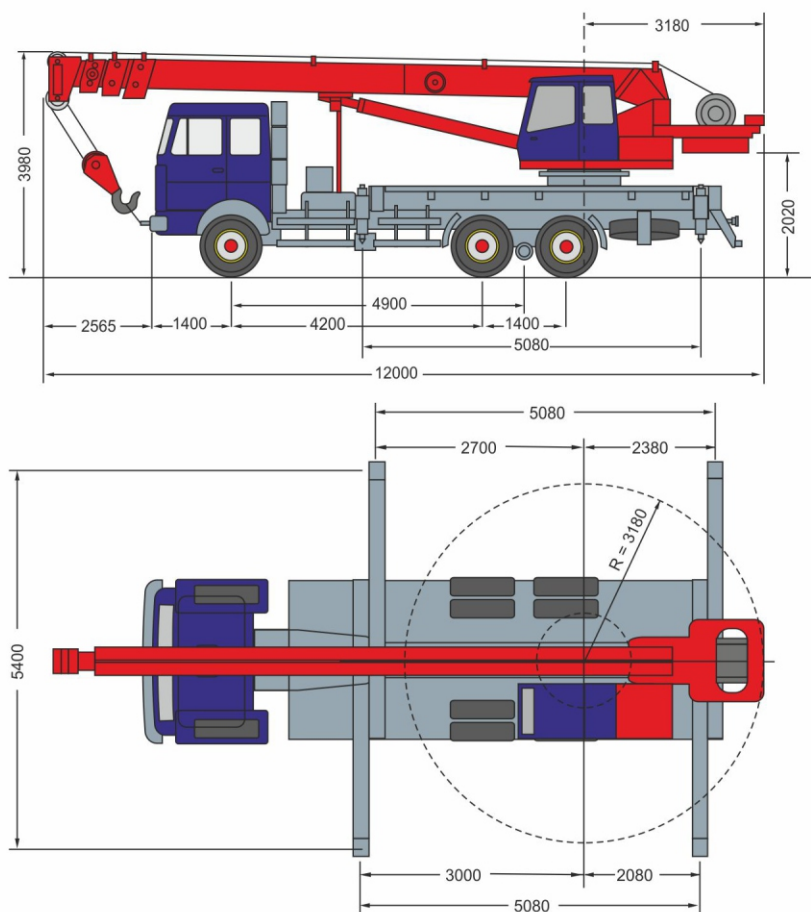
The mobile crane **KS-55727 "Masheka"** on chassis of **MAZ-6303**.

Rental services for the **"Masheka"** truck crane with a lifting capacity of **25 tons** and an arrow of **28 meters** are most in demand for loading and unloading and installation work at a height of up to **22 meters**.

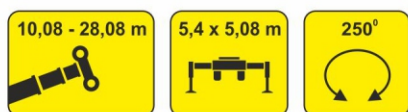
The chassis of the Masheka truck crane based on **MAZ-6303** has high reliability and maneuverability. The **MAZ YaMZ-236B** engine is famous for being easy to start even in severe frosts. The two driving axles of the truck crane have all the necessary differential locks - axial and inter-axle.

The Masheka truck crane has a telescopic boom that changes in length from **10 to 28 meters**! Each section is secured in end position with a locking pin, which gives additional rigidity to the telescope.

The outriggers of the crane are controlled hydraulically from one valve, which reduces the time of folding from the transport position to the working position and vice versa.



KS-55727 "MASHEKA"
on chassis of MAZ-6303



Lifting capacities						
	10,08	14,08	16,08	22,08	24,08	28,08
3,2	25,0					
4,0	16,3	11,8				
4,2	15,5	11,8	10,3			
4,7	13,8	11,2	10,3			
5,0	12,8	10,8	9,3			
6,0	9,5	8,0	7,3			
7,0	7,3	6,3	5,7	5,3		
7,3	6,8	5,9	5,3	4,9		
8,0	5,8	5,1	4,6	4,2	3,8	
9,0		4,1	3,7	3,3	3,1	
10,0		3,4	3,0	2,75	2,5	2,3
11,0		2,9	2,5	2,73	2,1	1,9
12,0		2,6	2,1	2,0	1,85	1,7
14,0			1,6	1,5	1,3	1,2
16,0				1,15	1,05	0,9
18,0				1,0	0,95	0,8
20,0					0,8	0,7